



REACH THE UNREACHABLE

**ROPE ACCESS**  
SERVICES



GENERAL COMPANY PROFILE

# ROPE ACCESS SERVICES

# MISSION STATEMENT

## VISION:

To lead the market in the safe, efficient and professional provision of rope access services.

## MISSION:

To successfully provide safe, time and cost effective solutions to access related problems for industrial and non-industrial clients need while ensuring the highest standards in all our endeavors



## ABOUT US

Rope access is a Saudi owned and operated company, with professionally trained, experienced and certified staff, providing safe, time and cost effective solutions to problems related to accessing vertical structures while following the highest industry safety and operational standards.





# OUR SERVICES

Our team consists of professionally trained , multi-skilled ,experienced and certified members who are dedicated to getting the job done using the highest industry standards for procedures and practices. Our services encompass the following:

- **CLEANING SERVICES:**

1. NORMAL AND DEEP CLEANING (MARBLE,STONE,GLASS PANEL, WOOD PANEL, ALL KINDS OF CLADDING AND MOUNTED MATERIALS)
2. METAL CLEANING (IN LOW AND HIGH AREA)
3. EXTERNAL & INTERNAL FACADE CLEANING ( LOW & HIGH STRUCTURE)

- **MAINTENANCE SERVICES:**

1. GENERAL MAINTENANCE FOR HORIZONTAL AND VERTICAL STRUCTURES (BOTH GROUND AND HIGH PLACES FOR ALL KIND OF MAINTENANCE SYSTEM)
2. TORCH MAINTENANCE
3. INDUSTRIAL HYGIENE (GENERAL ANALYSIS)

- **CONSTRUCTION SERVICES:**

1. PAINTING OF BOTH HIGH AND LOW STRUCTURES, ONSHORE AND OFFSHORE
2. INSTALLATION OF ANY KIND OF CONSTRUCTION AND REPAIR (GFRC, MARBLE, SCAFFOLD, CLADDING MATERIALS AND ETC.)
3. ELECTRICAL INSTALLATION, INCLUDING TELEPHONE SYSTEM NETWORKING AND SURVEILLANCE SYSTEMS
4. INSTALLATION OF ANY STICKER, POSTER & SIGNAGE ( FROM LOW AND HIGH-RISK AREA)
5. ALL MECHANICAL REPAIRING AND INSTALLATION WORK
6. EXTERNAL AND INTERNAL MAINTENANCE ACCESS SYSTEMS INSTALLATION AND SUPPLY
7. LEAKAGE SYSTEM INSPECTION AND REPORT IN BOTH LOW AND HIGH RISK (HORIZONTAL AND VERTICAL STRUCTURES)
8. SPECIALIZED IN HIGH-RISK JOB S BOTH LOW AND HIGH RISE STRUCTURES )
9. INSTALLATION OF TENT ( HIGH TENSION FABRIC ROOFING PVC COATED & PVC ROOFING )
10. INSTALLATION OF SURVILLANCE CAMERA, FIRE ALARM SYSTEM & ETC.

- **TRAINING SERVICES:**

1. ROPE ACCESS TECHNICIAN TRAINING
2. PROFESSIONAL SAFETY MEASURE TRAINING
3. RESCUE TRAINING

- **OTHER SERVICES:**

1. INDUSTRIAL HYGIENE (GENERAL ANALYSIS)
2. NDT (NONDESTRUCTIVE TESTING) SERVICES
3. GEN. MAINTENANCE,CLEANING SERVICES ( PETROCHEMICAL INDUSTRIES )



# Industries using Rope Access

Rope access's safe system of work provides a solution to access inaccessible areas and complete task without compromising safety. Many major industries have been utilising rope access methodology for their work at height activities and difficult to access areas.



OIL & GAS INDUSTRIES



SHIPPING INDUSTRIES



ON SHORE & OFF SHORE INDUSTRIES



WIND TURBINES



PETROCHEMICAL INDUSTRIES



TELECOMMUNICATIONS TOWER



SHIP & OIL RIGS



CIVIL BUILDINGS





# WHY ROPE ACCESS?



## SAFETY

Safety and speed with which workers can get to or from difficult locations.



## RISK REDUCED

Reducing the total man-hours and risk involved and costs.



## COST REDUCED

Special rope access techniques for maintenance, construction & inspection to minimize down-time & cost



## WELL-QUALIFIED

ROPE ACCESS certified rope access technicians are well qualified in technical rope access techniques



# GENERAL SAFETY RULES



# GENERAL SAFETY RULES



The following safety instructions should be adhered to at all times when using the rope access maintenance cleaning system; failure to do so could lead to accident and /or injury:

1. Keep openings clear at all times.
2. Do not operate damaged Equipment. In the event that the equipment is found to be damaged or difficult to use/operate, mark/level a warning notice on the place and ensure that a qualified person inspects the damage equipment
3. Always assign ground personnel for further assistance
4. The entire area must be marked with safety signage/warning devices
5. Clean and check all .PPE's before starting the task



# PPE (PERSONAL PROTECTIVE EQUIPMENT)



# PPE (PERSONAL PROTECTIVE EQUIPMENT)





# PPE (PERSONAL PROTECTIVE EQUIPMENT)



## ROPE ACCESS FULL BODY HARNESS

### Specifications

Dorsal attachment point: for attaching a fall arrest system

Rear waistbelt attachment point: for attaching a restraint lanyard

Sternal attachment point: for attaching a fall arrest system

Side attachment points: for attaching a positioning lanyard for use in double mode

Certification(s): ANSI Z359.11, CE EN 361, CE EN 358

Material(s): nylon, polyester, aluminum, steel

**MORE SAFER THAN THE CONSTRUCTION  
FULL BODY HARNESS**

## CONSTRUCTION FULL BODY HARNESS



- Materials: high tenacity polyester tape
- Certifications: CE, EN 12 277 type A, UIAA 105
- Wide and flexible tape.
- Fully adjustable suspenders and leg loops for a precise fit.
- Two flexible material loops.
- Size: 1, 2
- Waist outline: 1 (60-95cm), 2 (75-105cm)
- Thigh contour: 1 (42-62cm), 2 (52-77cm)
- Weight: size 1- 580g, size 2-615g
- Warranty: 3 Years





# RISK ASSESSMENT



# What is Risk Assessment

Risk assessment is the identification of hazards that could negatively impact an organization's ability to conduct business. These assessments help identify these inherent business risks and provide measures, processes and controls to reduce the impact of these risks to business operations.

A risk assessment determines possible mishaps, their likelihood and consequences, and the tolerances for such events.[1] The results of this process may be expressed in a quantitative or qualitative fashion. Risk assessment is an inherent part of a broader risk management strategy to "introduce control measures to eliminate or reduce" any potential risk-related consequences





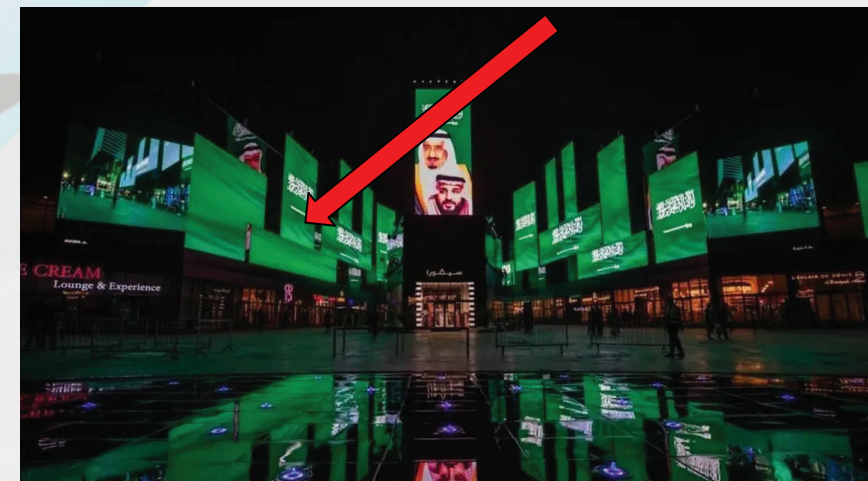
# CONSTRUCTION SERVICES



## UNDER IBFS CONSTRUCTION COMPANY



STEEL WORKS: Executing steel erection boulevard,  
Riyadh season quidiya project

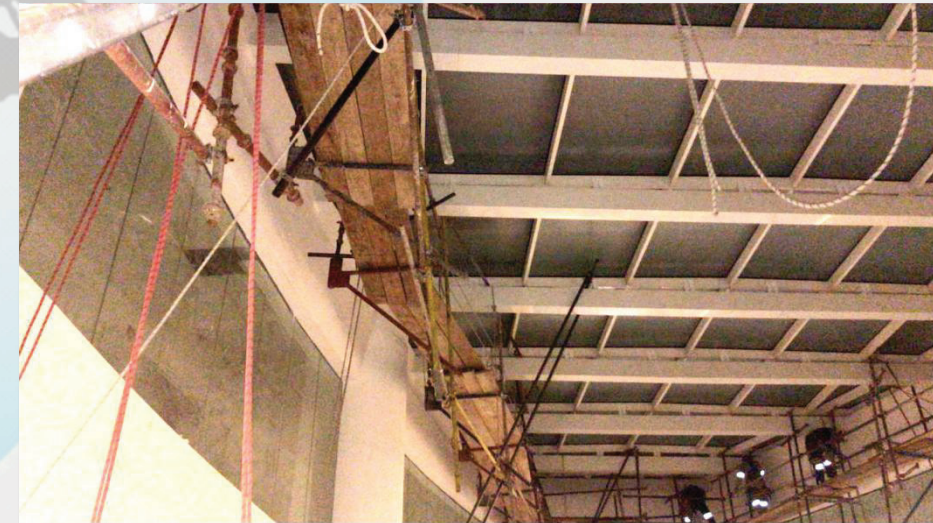






## UNDER THABAT COMPANY

Make the impossible possible; the installation of hanging scaffolding, 60M above sea level, performed by professional rope access technicians with relevant training and skills.

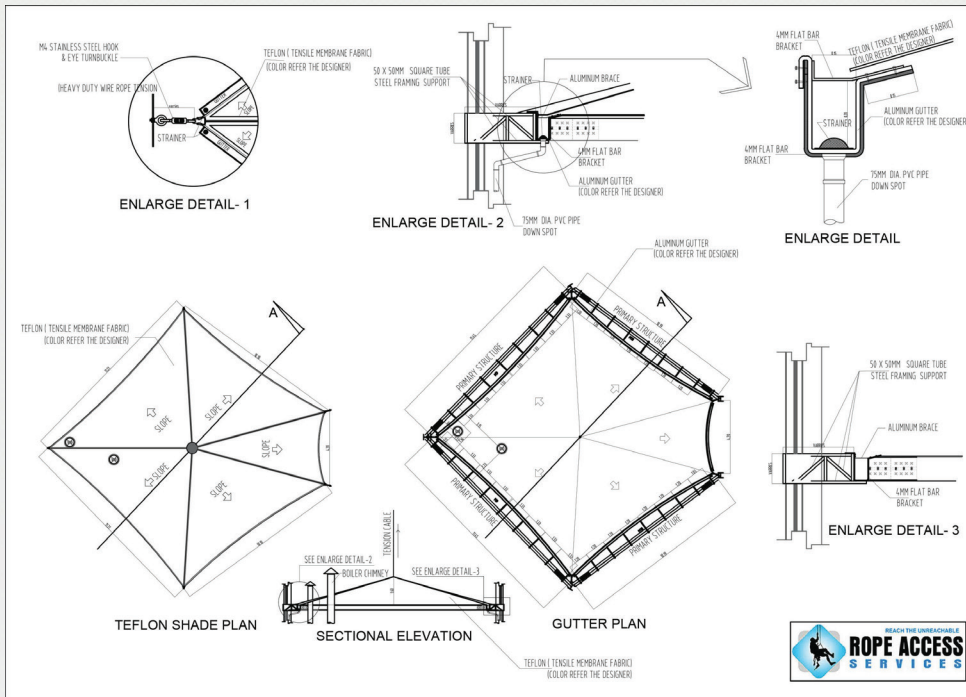


## UNDER HYKAL OMRANI COMPANY





# UNDER HYKAL OMRANI COMPANY



DESIGN & INSTALLATION OF HE SHIELD/CANOPY ( roof top boiler area), performed by professional rope access technicians with relevant training and skills.

## LE MEREDIEN HOTEL, RIYADH







## UNDER HYKAL OMRANI COMPANY

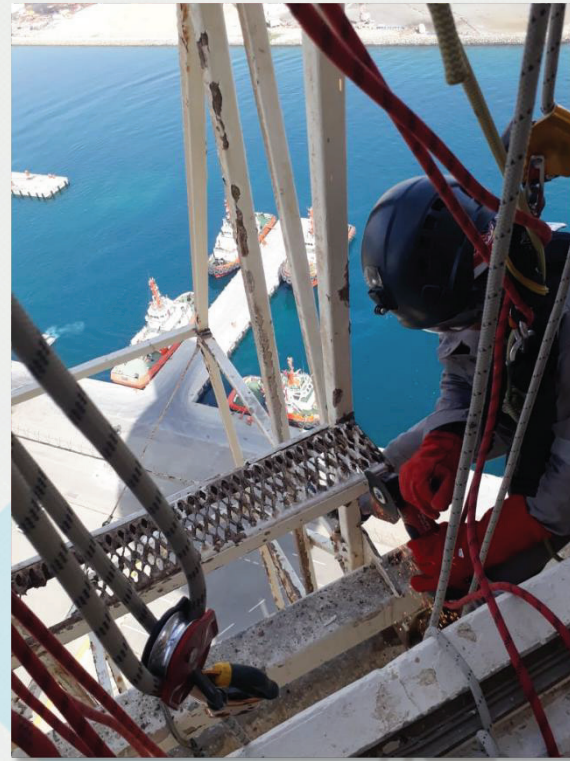
Re-painting at a high level; painting 45M above sea level, performed by professional rope access technicians with relevant training and skills.



## UNDER AL ZAHRAN HOLDINGS COMPANY

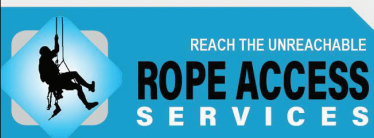




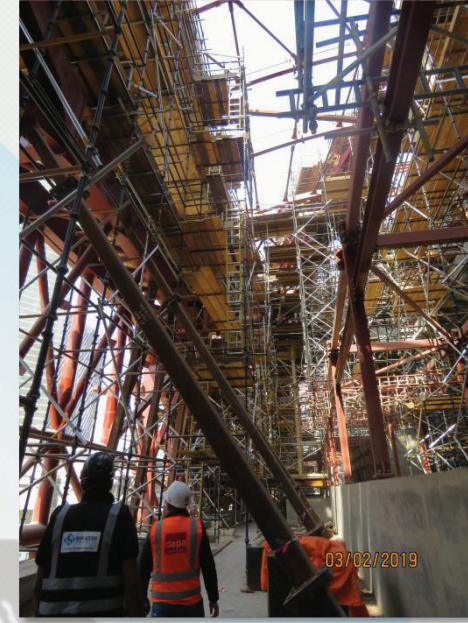


## UNDER ATCO COMPANY, JEDDAH PORT

Repairing and installation at high level; conducted 75M above sea level by the professional rope access technicians with relevant training and skills.

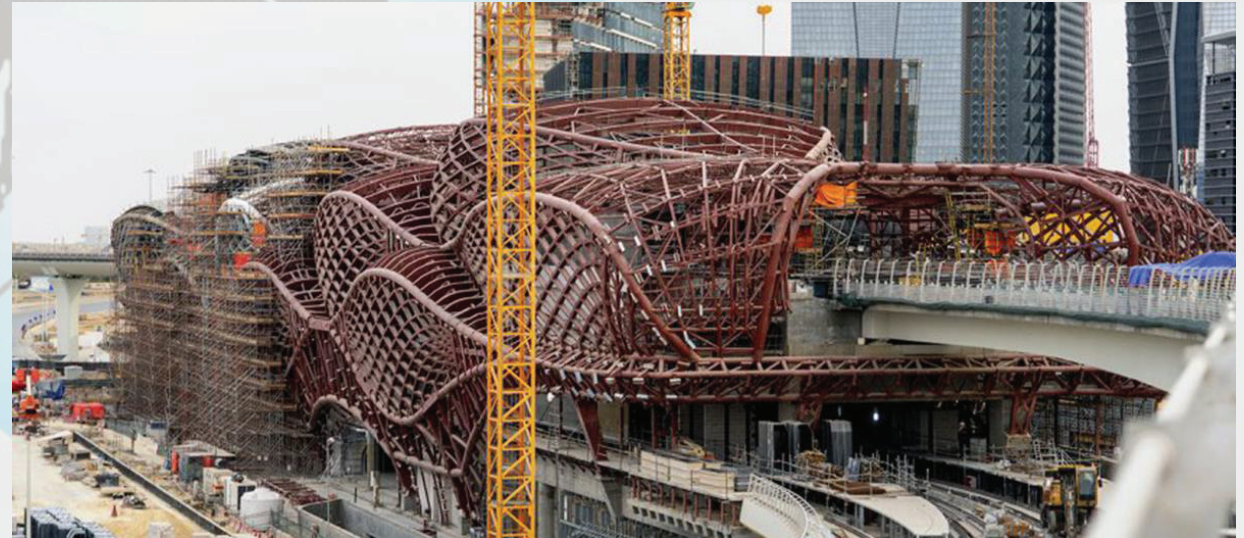






## UNDER BACS & DEPA COMPANY

Installation of internal maintenance access system KAFD Railway Station; performed by professional rope access technicians with relevant training and skills.







## MSX COMPANY

Repair and maintenance,  
performed by professional rope  
access technicians with relevant  
training and skills.





# NDT (NON DESTRUCTIVE TESTING SERVICES



# NON DESTRUCTIVE TESTING SERVICES



Non-Destructive tests are used to locate surface and subsurface defects, ensuring safety and reliability of materials, products and structures; NDT's commonly act as a quality assurance management tool throughout the asset's lifecycle – from production to decommissioning.





## TORCH CLEANING



Oil torch cleaning, performed by professional rope access technicians with relevant training and skills.

Oil torch maintenance, performed by professional rope access technicians with relevant training and skills.



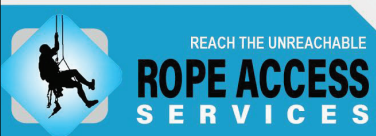


## PAINTING SERVICES



PAINTING SERVICES, performed by profesional rope access technicians with relevant training and skills. 70M above sea level

Cleaning services, performed by professional rope access technicians with relevant training and skills. 50M above sea level





# MAINTENANCE & ADHOC SERVICES

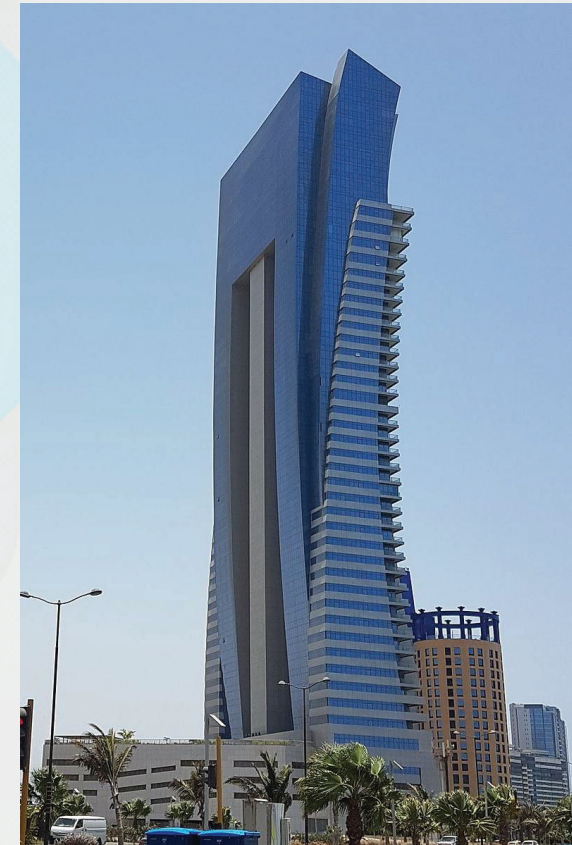


## **DAMAC TOWER, JEDDAH**

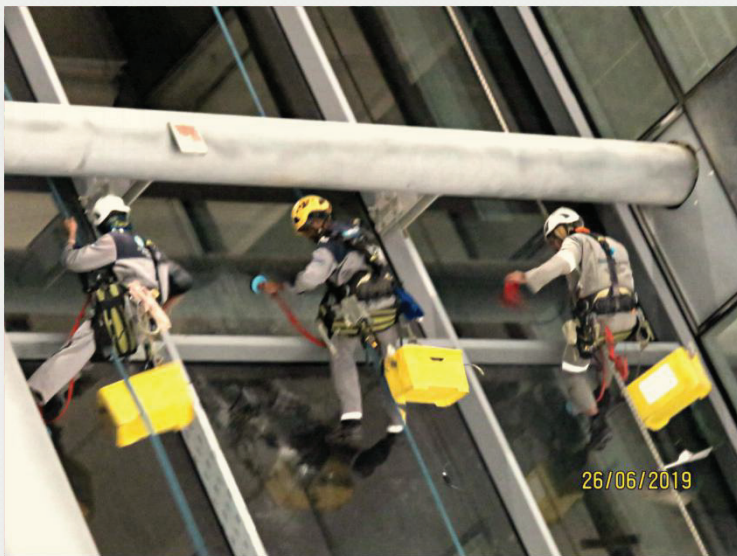
FACADE cleaning, performed by professional rope access technicians with relevant training and skills.



## **KING ROAD TOWER, JEDDAH**







## INTERNAL FACADE CLEANING,& GLASS REPLACEMENT. SCECO MAIN HEADQUARTERS, RIYADH

performed by professional rope  
access technicians with relevant  
training and skills.



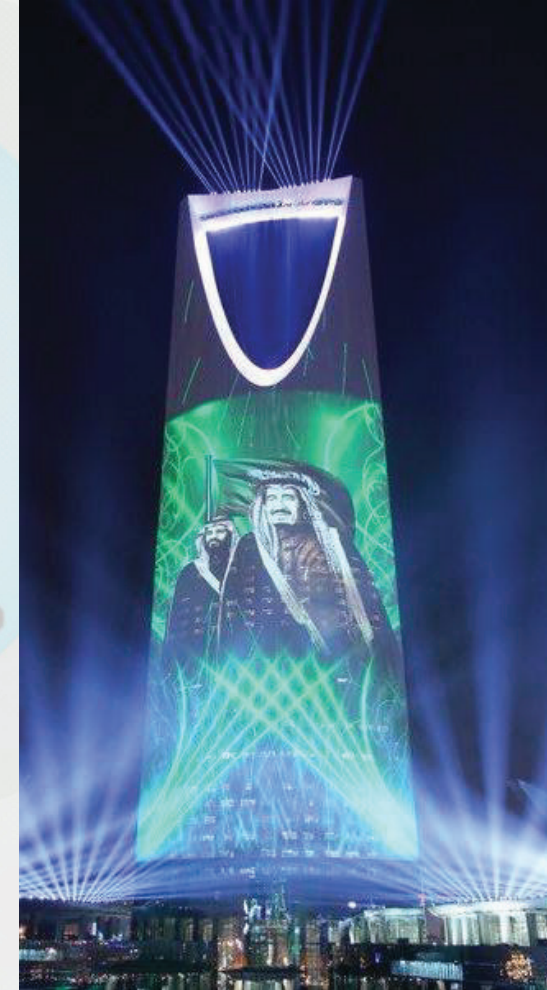




INSTALLATION OF STICKER FILM,  
performed by professional rope access  
technicians with relevant training and  
skills.

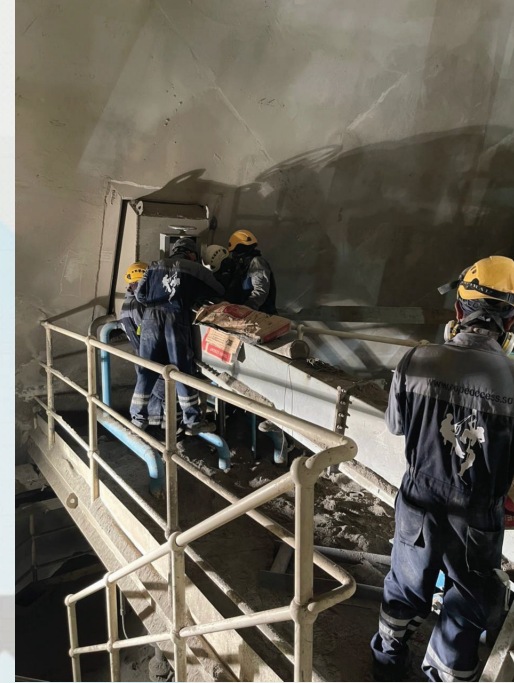


**KINGDOM CENTRE, RIYADH**





# YANBU CEMENT COMPANY



SILO CLEANING, COATING & MECHANICAL REPAIR PLUS HOT WORK performed by professional rope access technicians with relevant training and skills.



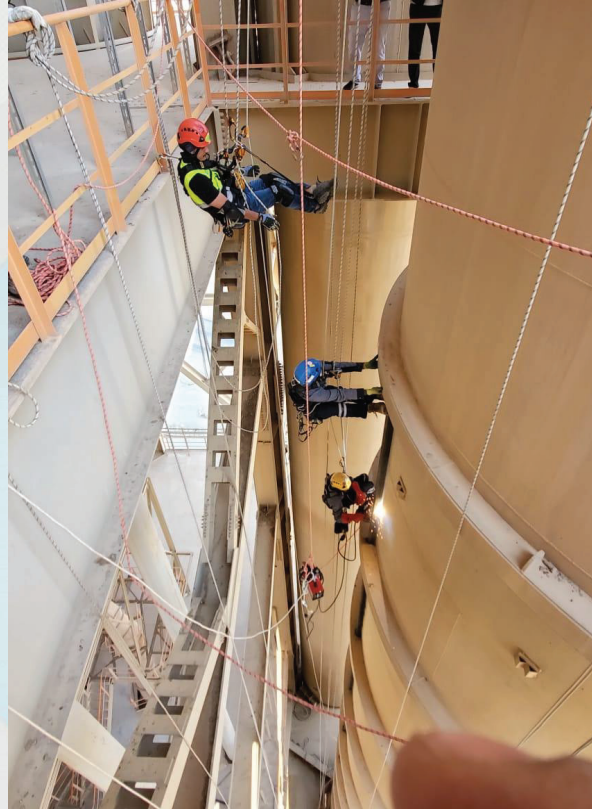


# HOT WORKS



## YAMAMA CEMENT

STRENGTHEN MAIN LINE CHIMNEY,  
Installation of the angle bar  
bracing/bracket via Hot Works, performed  
by professional rope access technicians  
with relevant training and skills.



strengthen main line chimney  
( Hot Works )





## UNDER MSX COMPANY



## KING FAHD STADIUM, RIYADH

CLEANING & INSPECTION OF RISK, performed by professional rope access technicians with relevant training and skills.





**UNDER SELA COMPANY &  
Losberger De Boer**



## **SUPERDOME, JEDDAH** ( biggest dome in the world)

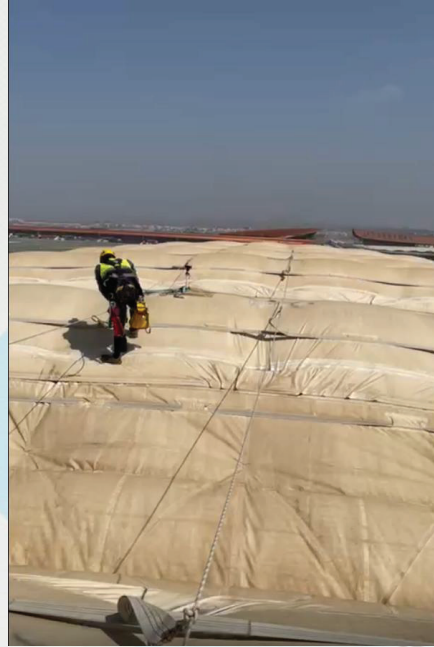


**CLEANING & WATER LEAK TEST INSPECTION,**  
performed by professional rope access technicians  
with relevant training and skills.





## UNDER SAEI COMPANY & BUILDAIR COMPANY



WATER LEAK TEST INSPECTION, REPAIR &  
CLEANING performed by professional rope access  
technicians with relevant training and skills.

## HANGAR 75 JEDDAH AIRPORT (biggest hangar in the world)







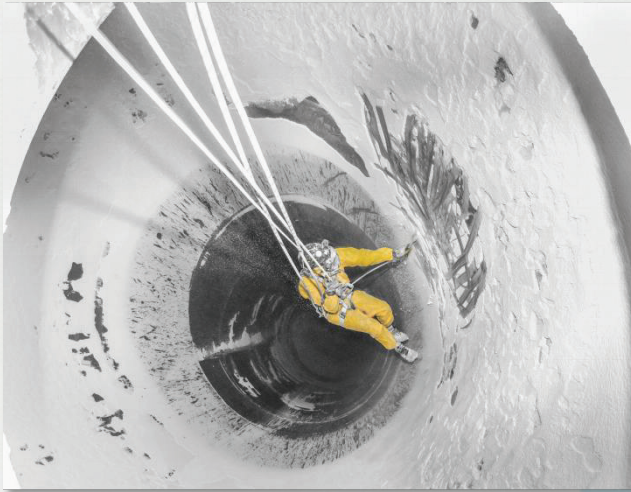
## SARS RIYADH

CLEANING OF EXTERNAL SURFACE OF LOCOMOTIVE WAGON, performed by professional rope access technicians with relevant training and skills.





# CONFINED SPACES



## COCA COLA BOTTLING FOR SAUDI ARABIA

INSPECTION & GENERAL CLEANING  
INTERNAL OF SILOS, performed by  
professional rope access technicians  
with relevant training and skills. during  
Riyadh Season





# CONFINED SPACES



## SABIC GAS COMPANY

INSPECTION, GENERAL CLEANING INTERNAL & INSTALLATION OF HANGING SCAFFOLDING INSIDE OF PH-I COLD BOX, performed by professional rope access technicians with relevant training and skills.







# TRAINING SERVICES





## CIVIL DEFENSE RESCUE TRAINING



**RESCUE TRAINING**, By an International Rescue Team in the Latest Rescue Techniques using **ROPE ACCESS METHOD** with the goal of saving lives







## CIVIL DEFENSE THEORETICAL TRAINING

THEORETICAL TRAINING, conducted by the professional rope access trainer with relevant training, knowledge and skills.







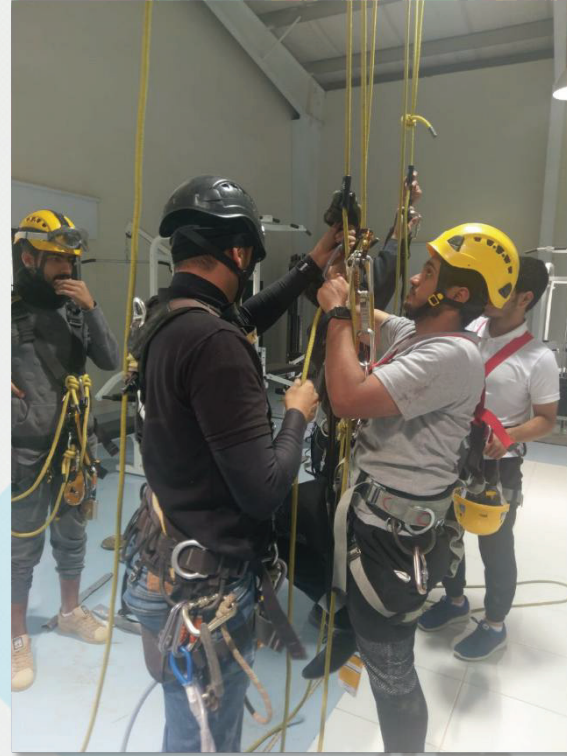
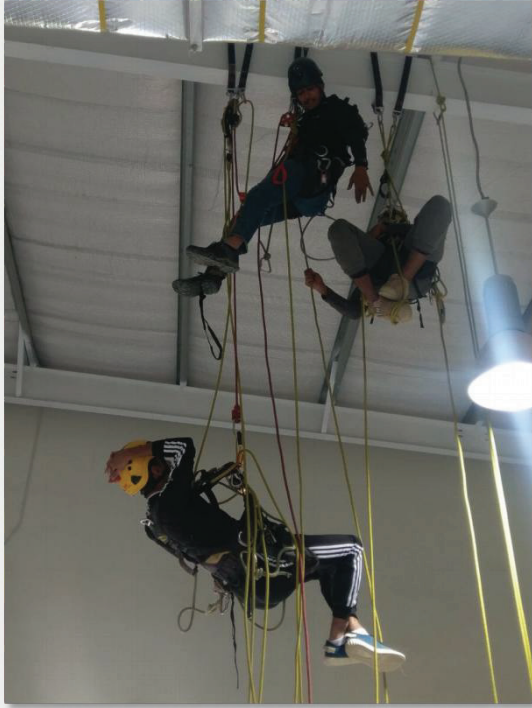
## CIVIL DEFENSE PRACTICAL RESCUE TRAINING



PRACTICAL RESCUE TRAINING, conducted by professional rope access trainer with relevant training, knowledge and skills.







## ROPE ACCESS PRACTICAL BASIC TRAINING

ROPE ACCESS PRACTICAL BASIC TRAINING,  
conducted by professional rope access trainer with  
relevant training, knowledge and skills.







# ENTERTAINMENT







## OSOOL COMPANY

DECOMMISSIONING OF ZIPLINE, performed by professional rope access technician and with relevant training and skills. during Riyadh Season





# QUIDDIYA PROJECT



## SIXENSE COMPANY

INSTALLATION OF PRISM: perform by the rope access technician with relevant level of training and skills.







# CLIENTS & PARTNER







# CLIENTS

# PARTNER







# PROJECT CERTIFICATION







## Certification of Completion

this is to certify that



REACH THE UNREACHABLE

**ROPE ACCESS**  
SERVICES

successfully completed the assigned tasks at the King Salman International Convention Center in Madina Al-Munawarah, including assisting in the commissioning of firefighting equipment, replacement of lighting fixtures, removal of high-level scaffolding and various contraction task to a high standard, in accordance with international safety standards and practices, and with no accidents

  
Ahmed AbdulRahman Ba Harmi  
Site - Project Manager

THABAT  حبات



REACH THE UNREACHABLE

**ROPE ACCESS**  
SERVICES





Le MERIDIEN  
HOTELS & RESORTS

# Certificate of Completion

this is to certify that



Completed the assigned tasks at the LE MERIDIEN HOTEL,  
Corner of King Abdullah St. & Olaya St. Riyadh which was for the  
WATER LEAK INSPECTION OF THE CURTAIN WALL FACADE  
also, we satisfy and certify that they have finished the job in a highly, professional standard,  
by the international rules & law for water leak testing method and  
international safety standards practices, with no accidents, happen.

Manager

Project Manager



REACH THE UNREACHABLE  
**ROPE ACCESS**  
SERVICES





## Certificate of Completion

THIS IS TO CERTIFY THAT



**ROPE ACCESS**  
SERVICES CO.

HAVE SUCCESSFULLY COMPLETED THE PANEL REPAIR AND FRAME WELDING  
TO THE LIGHTHOUSE AT JEDDAH ISLAMIC PORT

23-March-2017

Director

Date



REACH THE UNREACHABLE

**ROPE ACCESS**  
SERVICES





شركة كوكا كولا السعودية لتعبئة المصنوعات  
The Coca-Cola Bottling Company of Saudi Arabia

Date 10/03/2020



## CERTIFICATION OF COMPLETION

THIS IS TO CERTIFY THAT

### ROPE ACCESS SERVICES EST.

CR # 1010275095

Has completed the services in INTERNAL COCA COLA BOTTLING COMPANY in compliance with the international safety standards and safety standard of the COCA COLA BOTTLING FOR SAUDI ARABIA, Sudair Industrial City Stage, Riyadh 11383.

With the high Risk scope of work: INSTALLATION OF INTERNAL MAINTENANCE ROPE ACCESS SYSTEM (the working at height regulations 2005 and complying with BS 8437:2005 standards.) AND GENERAL INSPECTION OF EXTERNAL LIFE LINE SYSTEM Using Rope and perform by the highly trained rope access technician. This was completed without any casualties or incidents happen.

Property Manager

Nayef A Alshammari

Coca Cola Bottling Company



هاتف خدمة العملاء 920007799 - المملكة العربية السعودية - شركة ذات مسؤولية محدودة رأسمالها 100 مليون ريال سعودي، بالكامل - ب.ت 1010235715  
Customer Service Tel 920007799 - KSA - Limited Liability Company - Capital 100 million SR. - CR 1010235715

City	POB ب.ت	الرمز Code	CC ت.ع	فاكس Fax	هاتف Tel	المدينة
الرياض	2702	44555	55455	011 966114000707	011 966114000707	الرياض



REACH THE UNREACHABLE

**ROPE ACCESS  
SERVICES**





## شهادة

تشهد قيادة قوات الطوارئ الدفاع الخاصة

أن مؤسسة/ وصول الحبال

ممثلة بالسيد/ خالد علي الشريف

قد قاموا بعمل تدريب نظري وعملي لـ (10) أفراد من فريق الإنقاذ الدولي في مدة (5) أيام بمقر الدفاع المدني بمدينة الرياض وذلك على أحدث الوسائل الخاصة بالتسلق بالحبال وعمليات الإنقاذ في الأماكن التي يصعب الوصول إليها متمنين لهم دوام التوفيق لخدمة وطننا الحبيب

قائد قوات الطوارئ الخاصة

العميد/ خالد بن ناصر الحرقان



REACH THE UNREACHABLE

**ROPE ACCESS**  
SERVICES



## CERTIFICATE OF COMPLETION

This is to certify that

### ROPE ACCESS FOR MAINTENANCE AND CLEANING EST.

Certificate of registration no. 1010275095.

Has Successfully completed the assigned task at  
YAMAMA CEMENT COMPANY. Al Riyadh KSA. Which was for the  
HOT WORK OF THE CHIMNEY (strengthen main line chimney)

September 2020

Without stopping the production. materials & Height level as follow:

- Angle bars
- Height Levels LV+110m and LV+160m

In Addition, we certify that they have finish the job in a highly  
professional standard in accordance with international safety  
standards and practices with ZERO accident.

Plant Administration Manager







اسمنت ينبع  
Yanbu Cement

### (شهادة إتمام العمل)

يشهد مصنع اسمنت ينبع بأن مؤسسة وصول الحبال للصيانة والنظافة سجل تجاري رقم (١٠١٠٢٧٥٠٩٥) قد أنهت أعمال الصيانة والنظافة والفحص البصري والذي تم في شهر مارس / أبريل لعام ٢٠٢٠ م :-

- ١- صومعة الاسمنت
- ٢- مبنى التحكم المركزي الخط الرابع
- ٣- مبنى التحكم المركزي الخط الخامس

ونشهد لهم بتمام العمل بجودة عالية وبالوقت المتفق عليه ، وتطبيق الاشتراطات والمعايير الدولية للسلامة المهنية في الأماكن المغلقة ، وقد أمموا العمل بكل احترافية وبدون وقوع أي حوادث .



شركة مساهمة سعودية  
رأس المال (٠,٥٧٥,٠٠٠,٠٠٠) ريال مدفوعة بالكامل  
الإدارة العامة:  
ص.ب. ٥٣٣٠ ج.د. ٢١٤٢٢  
هاتف: +٩٦٦ ١٢ ١٥٣١٥٥٥  
فاكس: +٩٦٦ ١٢ ١٥٣١٤٢٠  
س.ب. جدة: ٤٧٠٠٠٠٢٣٦ | ب.ب. ينبع: ٤٧٠٠٠٠٢٣٣



Saudi Joint Stock Company  
Authorized Capital SR (1,575,000,000) Fully Paid  
Head Office Jeddah:  
P.O Box 5330 Jeddah 21422  
Tel. +966 12 6531555  
Fax. +966 12 6531420  
C.R. Jeddah: 4030021367 | Yanbu: 4700000233



اسمنت ينبع  
Yanbu Cement

### CERTIFICATE OF COMPLETION

ROPE ACCESS FOR MAINTENANCE AND CLEANING EST. Certificate of registration no. 1010275095. Has Successfully completed the assigned task at YANBU CEMENT COMPANY . Al Nabah Yanbu. Which was for the VISUAL INSPECTION, MAINTENANCE & CLEANING of the following:

1. CEMENT SILO
2. CCR Building L4
3. CCR Building L5

In Addition, we certify that they have finish the job in a highly professional standard in accordance with international safety standards and practices and with no accidents happen.



شركة مساهمة سعودية  
رأس المال (٠,٥٧٥,٠٠٠,٠٠٠) ريال مدفوعة بالكامل  
الإدارة العامة:  
ص.ب. ٥٣٣٠ ج.د. ٢١٤٢٢  
هاتف: +٩٦٦ ١٢ ١٥٣١٥٥٥  
فاكس: +٩٦٦ ١٢ ١٥٣١٤٢٠  
س.ب. جدة: ٤٧٠٠٠٠٢٣٦ | ب.ب. ينبع: ٤٧٠٠٠٠٢٣٣



Saudi Joint Stock Company  
Authorized Capital SR (1,575,000,000) Fully Paid  
Head Office Jeddah:  
P.O Box 5330 Jeddah 21422  
Tel. +966 12 6531555  
Fax. +966 12 6531420  
C.R. Jeddah: 4030021367 | Yanbu: 4700000233



REACH THE UNREACHABLE  
**ROPE ACCESS  
SERVICES**





## CERTIFICATE OF COMPLETION

This certifies that

### ROPE ACCESS SERVICES

Has successfully completed their assigned task in a highly professional standard in accordance with international safety standard practices with ZERO accident by **REPLACING AND RE-POSITIONING RADIO UHF ANTENNA** at the height of 30 meters above sea level on September 2020.

  
Saleh A. Al-Haifan  
Sr. Manager, EHSS

Date: 11<sup>th</sup> April 2021



A SABIC and ExxonMobil Chemical Arabia Inc. Joint Venture







## CERTIFICATE OF APPRECIATION

National Industrial Gases Co. ( GAS ) would like to express its thanks and appreciation to **Rope Access services est., CR# 1010275095** for the safe completion of **PH-1 COLD BOX CONFINED SPACE** visual inspection, support in erecting hanging scaffolding and stand- by rescuer team with related activities by using rope access techniques.

Ramzi Shabanah  
Sr. Manager Maintenance  
GAS - YANBU  
Septemper, 2021

A SABIC Affiliate



REACH THE UNREACHABLE

**ROPE ACCESS  
SERVICES**



# Certificate of Completion

this is to certify that



successfully completed the below mentioned works below at the

## JEDDAH SUPER DOME

(34.000 m2)

Al Madinah Al Munawarah Road, Jeddah, Saudi Arabia  
(near the stadium of King Abdullah Sports City, Al Jawhara)

in 16 days

**PVC ROOF CLEANING**

**WATER LEAK TEST INSPECTION**

**OBSTRUCTION LIGHT REPAIR**

**AT 46M ABOVE SEA LEVEL**

The works were finished  
in accordance with international safety standards and  
practices and without accidents.



LOSBERGER DE BOER

Martijn Maartens, Procurement Manager

Losberger De Boer International







## CERTIFICATE OF COMPLETION

THIS IS TO CERTIFY THAT



Certificate of registration no. 1010275095

Has Successfully completed the assigned task at QIDDIYA PROJECT under  
SIXENSE SOLDATA. Riyadh KSA. Which was for the  
**INSTALLATION OF NET FOR THE ROCK FALL &  
INSTALLATION OF 130 PCS PRISM ( RANDOM LOCATION ) QIDDIYA CLIFFS**  
( at the Random height from 80m and above from sea level )

April, 2021

In Addition, we certify that they have finish the job in a highly professional  
standard in accordance with international safety standard practices with  
ZERO accident.



sixense



Administration Manager







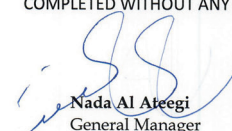
KINGDOM  
CENTRE

### CERTIFICATION OF COMPLETION

THIS IS TO CERTIFY THAT,

HAS COMPLETED THEIR CLEANING SERVICES. REPLACING THE GLASS PANEL AND MAINTENANCE WORK FOR THE OUTSIDE INTERFACE IN COMPLIANCE WITH INTERNATIONAL SAFETY STANDARDS AND PER THE SAFETY STANDARDS OF KINGDOM CENTRE.

WITH THE HIGH RISK SCOPE OF WORK: **REPLACING THE 4 GLASS PANELS FROM THE 78<sup>TH</sup> AND HIGHER FLOORS (EXTERNAL FAÇADE KINGDOM CENTRE KSA)** USING ROPE BY PROFESSIONALS AND HIGHLY TRAINED TECHNICIANS. THIS WAS COMPLETED WITHOUT ANY CASUALTIES OR INCIDENTS.

  
Nada Al Ateegi  
General Manager  
Kingdom Trade Centre.



Kingdom Centre Company Ltd., P.O. Box 230011, Riyadh 11321, Kingdom of Saudi Arabia  
Tel : +(9661) 211 2222, Fax: +(9661) 211 2211, Email: KC@kingdomcentre.com.sa  
TCCL is a Limited Liability Company with paid up Capital of SR 1,000,000,000 (C.R. 1010151663)

### Certification

Tartib Al Hadath Company for Arranging and Managing Exhibitions



Certifies that



Has finished the given task, which was for the Installation of (3M) See-Through Stickers on the Kingdom Tower Façade, Riyadh, for the the 87<sup>th</sup> Saudi National Day Celebration Event. In addition, we certify that they have finished the job in a high, professional standard, in accordance to the International Safety Standards and with no accidents.

  
Director



  
Director

شركة ترتيب الأحداث والإقامة والتجهيز والتدريب  
Tartib Al Hadath Company for Arranging and Managing Exhibitions

الرياض - المملكة العربية السعودية  
Riyadh - Kingdom of Saudi Arabia

تاريخ التوقيع: 2017-10-30  
Date of Signature: 2017-10-30

مختبرات: 1010348225  
Lab: 1010348225

1010348225  
1010348225



REACH THE UNREACHABLE

**ROPE ACCESS**  
SERVICES









الهيئة الملكية للجبيل وينبع  
Royal Commission for Jubail & Yanbu  
HEADQUARTER

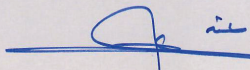
## Certificate of Completion

this is to certify that



Successfully completed the assigned tasks at the ROYAL COMMISSION FOR JUBAIL & YANBU building, located at Jeddah Rd, Riyadh 12324, which was for the **REMOVAL AND INSTALLATION OF SILICONE FOR PARAPET AT EXTERNAL FACADE, AND INSPECTION FOR WATER LEAK AT EXTERNAL FACADE**

In Addition, we certify that they have finished the job in a highly, professional standard, in accordance with international safety standards and practices, and with no accidents happen.

  
GENERAL MANAGER OF OPERATIONAL EXCELLENCE



روفان  
rofan



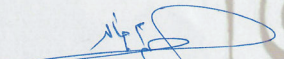
مجموعة منافع الاقتصادية القابضة  
Manaf'e Economic Holding Group


## Certificate of Completion


this is to certify that



Successfully completed the assigned tasks at the ROFAN TOWER, Rawdah Street, Jeddah. under the management of **MANAFE ECONOMIC HOLDING GROUP**, which was for the **INSTALLATION OF EXTERNAL & INTERNAL ANCHOR BOLT FOR MAINTENANCE ACCESS SYSTEM**. In Addition, we certify that they have finished the job in a highly, professional standard, in accordance with international safety standards and practices, and with no accidents happen.

  
Project Manager

  
Manafe General Manager







# SAMREF :

UNDER CONTRACT # 4600002004  
PO # 4500112952

## SCOPE OF WORK:

Provision of rope access NDT inspection & insulation services for VACUUM TOWER, conducted by professional rope access technician with relevant training, knowledge and skills.



## Certificate of Completion

This is to certify that **Rope Access Services (CR # 1010275095)** has successfully completed:

- a) Removal of insulation around the Vacuum Tower Vessel.
- b) NDT testing (including Ultrasonic testing of Vacuum Tower Vessel and PT on 360° anchorage point weld for rope access anchoring).
- c) Reinstalling insulation after completion of NDT inspection.

It was professionally executed to the highest safety standards and practices without any losses or near misses during the works.

Date: 10/09/2020

SAMREF Representative:

Saud Al-Somari  
Inspection Group Leader - SAMREF

Signature:

Samref - Internal





# ISO REGISTRATION CERTIFICATION



# CERTIFICATE OF REGISTRATION



## *This is to certify that the Quality Management System of* **Rope Access Institution for Maintenance and Cleaning**

Riyadh – Al Mursalat Quarter, Abdul Aziz Aba Hussain Street,

P.O. Box 3036 – Riyadh 12461

has been assessed and registered by TNV as conforming  
to the requirements of:

### ISO 9001 : 2015

For the following Scope

**PROVIDING INDUSTRIAL AND COMMERCIAL NDT INSPECTION,  
CLEANING, PAINTING, CONSTRUCTION, MAINTENANCE  
AND REPAIR SERVICES USING ROPE ACCESS**

Certificate Number : 1906240660131  
Issue Date : 24<sup>th</sup> Jun. 2019  
Certificate Expiry Date : 23<sup>rd</sup> Jun. 2022

**Alka Jasooja**  
Director

TNV Certification UK Ltd.  
Regd. Off: Armstrong House, First Avenue, Robin Hood Airport, Doncaster, South Yorkshire, England, DN9 3GA,  
United Kingdom  
Mail: info@tnv.uk.com  
Certificate can be verified on Accreditation Board website: [www.abcab.org](http://www.abcab.org) and on CAB's website  
[www.tnv.uk.com](http://www.tnv.uk.com)

TNV Certification UK Ltd is a Conformity Assessment Body as per requirement of ISO 17021 and meet the requirement of all Mandatory Documents of International Accreditation Forum for the Management System Certification Scheme.  
In the issuance of this certificate, TNV Certification UK Ltd. assumes no liability to any party other than to the Client, and then only in accordance with the agreed upon Certification Agreement. This certificate's validity is subject to the organisation maintaining their system in accordance with TNV's requirements for systems certification organisation maintaining their system in accordance with TNV's requirements for systems certification.

The certificate remains the property of TNV Certification UK Ltd., to whom it must be returned upon request



TNV UK TNV UK TNV UK TNV UK



REACH THE UNREACHABLE  
**ROPE ACCESS  
SERVICES**

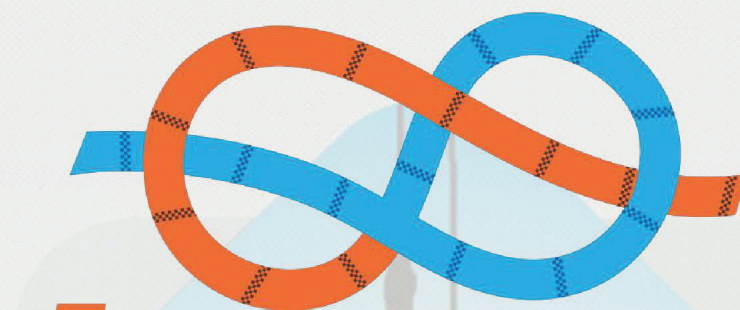




# ACCREDITED CERTIFICATION







**iracs**

INTERNATIONAL ROPE ACCESS  
CERTIFICATION SCHEME





# ABOUT IRACS

IRACS is an ISO/IEC 17024:2012 accredited certification body by International Accreditation Services which is authorized by IAF MRA to provide accreditation under the ISO/IEC 17024:2012. International Rope Access Certification Scheme (IRACS) operates certification of persons to qualify industrial rope access personnel through training, examination and certification. IRACS sets out the criteria for rope access personnel aiming to achieve the desired competency to meet the code of practice defined in ISO 22846 standard.



# ABOUT IRATA

IRATA is an acronym for the Industrial Rope Access Trade Association, that was formed in the UK in the late 1980's, to solve maintenance challenges in the offshore oil and gas industry. Its formation was the result of an initiative of a number of leading companies, who had begun to use industrial rope access techniques, to provide a safe working environment for the industry.

The rope access technique developed by IRATA is used in a wide range of repair, maintenance, inspection and access work. Rope access methodology boasts an unrivalled safety record, short set-up and dismantling time, positive environmental benefits and removes the need for invasive access equipment or disruption to a worksite. We are extremely proud that the IRATA system of rope access continues to enjoy increasing popularity throughout the world.

IRATA is now recognised as the world's leading authority on industrial rope access. It has over 570 member companies around the world and has trained in excess of 130,000 rope access Technicians worldwide. IRATA directs and regulates, through its members, the training of all workers seeking its qualifications. These member companies provide training, operational services, or both.







# ROPE ACCESS DEFINATION AND APPLICATION





# About Rope Access

Industrial rope access refers to a safe system of work using ropes for a wide range of work all over the world. The rope access system is a safe method of working at height where ropes and associated equipment are used to gain access to and from the work place, and to be supported there.

The advantage of using rope access methods mainly lies in the safety and speed with which workers can get to or from difficult locations and then carry out their work, often with minimal impact on other operations and the nearby area. Another major benefit is that the combination of the total man-hours and the level of risk for a particular task (man-at-risk hours) is often reduced when compared with other means of access and their associated risks and costs.

The primary objective when using rope access methods is to plan, manage and carry out the work with minimal accidents, incidents or dangerous occurrences, i.e. to ensure a safe system of work is maintained at all times, and with no damage to property or harm to the environment.

## Application of rope access

Rope access techniques are ideal for sites where access is difficult or impossible by other means and/or where there are no in-situ cradles or scaffolding or other platforms, and where the type of work to be done is suitable for the application of such techniques. Examples are:

- Non-Destructive Testing (NDT),
- Fabrication, Welding & Installation,
- Ship Inspection & Maintenance,
- Bridge inspection,
- ACP, Glass & Sign board Installation & maintenance,
- Storage tank inspection,
- Wind Turbine Inspection & Maintenance,
- RIG Inspection & Maintenance,
- Industrial blasting and painting,
- Electrical tray replacement & Instrumental installation and many more applications which can be done using





# Industries using rope access

Rope access's safe system of work provides solutions to access the inaccessible area and complete tasks without compromising safety. Many major industries have been utilizing the rope access methodology for their work at height activities and difficult to access areas. Here are some the major industries and areas where rope access is involved:

- Oil and Gas industries
- Onshore & Offshore
- Petrochemical Industry
- Tele communication towers

- Wind Turbines
- Ships and Oil Rig
- Civil Buildings
- Electric power plants/ towers

## Who is authorized to work on ropes?

Only a competent, trained and certified person is authorized to carry out rope access related activities and work on ropes. If any unqualified person works on rope access jobs, injuries or accidents may occur. The competency of the person can be recognized through certification. Rope access qualification shall only be achieved through proper training by training, examination and certification, and only certified persons are authorized to work on ropes.

IRATA rope access certification has three levels of certifications Level 1 (Basic), Level 2 (Intermediate) and Level 3 (Advanced Level). Each level has specific competencies as defined by IRATA. Those who are new to the rope access certification shall initially get IRATA Level 1 certification. There are scheme requirements to become Level 2 and Level 3. For more details visit [www.irata.org](http://www.irata.org).

### Only Individuals who are:

- **Properly Trained, Examined & Certified**
- **Rope Access Qualified**
- **Certified by reputed institutions**







# IRATA ensures QUALITY and SAFETY

abdulazlz aba hussain street, al mursilat , riyadh 12461, P.O box 2702 bldg. # 6485 TEL. # 966-11-4000-707 EMAIL: [info@ropeaccess.sa](mailto:info@ropeaccess.sa)





# THANK YOU!!!

# THANK YOU!!!





# contact details:



## MR. KHALID AL SHARIF

RA- Executive Mngr. & Multi-RA technician level 3

Phone # 011-4000-707

Mobile # +966 552-333-382

Email: [kalsharif@ropeaccess.sa](mailto:kalsharif@ropeaccess.sa)  
[info@ropeaccess.sa](mailto:info@ropeaccess.sa)

whatsapp: 0552333382

## MR. FARHAN KUDDOOS

RA- Project Manager

Phone # 011-4000-707

Mobile # +966 59-038-1534

Email: [farhan@ropeaccess.sa](mailto:farhan@ropeaccess.sa)  
[info@ropeaccess.sa](mailto:info@ropeaccess.sa)

whatsapp: 0590381534

